

WHY TAKE THE NCLEX IN CONNECTICUT?



***NO SSN NEEDED**



HOW MUCH IS THE APPLICATION FEE?

\$180



PAPER OR ONLINE APPLICATION?

both

REQUIREMENTS AND FEES



✓ **Certification Program (CP) - \$475**

CT requirements may change from time to time; hence, it is best to contact your board.

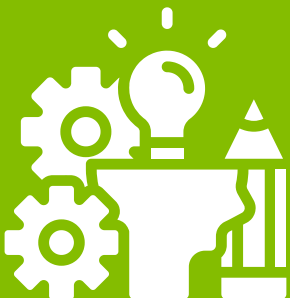
Registration with Pearson VUE for ATT: \$200
NCLEX Scheduling Fee: \$150

APPROXIMATE TIMELINE

1 YEAR

The timeline is a case-by-case basis and is unique to a candidate's application.

IS ENGLISH EXAM NEEDED?



No English exam needed.

This is upon verification of the credential evaluation body.

CONTACT DETAILS



dph.nursingteam@ct.gov,
oplc.dph@ct.gov



(860) 509-7603

