

WHY TAKE THE NCLEX IN ILLINOIS?



***NO SSN NEEDED**



HOW MUCH IS THE APPLICATION FEE?

\$107



PAPER OR ONLINE APPLICATION?

both

REQUIREMENTS AND FEES



- ✓ CES Report- \$475
- ✓ Fingerprinting - \$60*

**Fingerprinting will depend on the chosen approved IL vendor*

IL requirements may change from time to time; hence, it is best to contact your board.

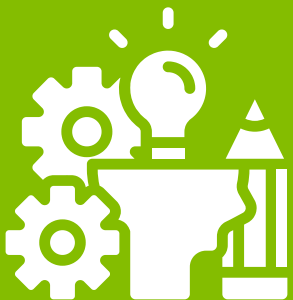
Registration with Pearson VUE for ATT: \$200
NCLEX Scheduling Fee: \$150

APPROXIMATE TIMELINE

1 YEAR

The timeline is a case-by-case basis and is unique to a candidate's application.

IS ENGLISH EXAM NEEDED?



Depends on CES Evaluation if nursing program was taught in English

This is upon verification of the credential evaluation body.

CONTACT DETAILS



FPR.info@illinois.gov



1 (888) 473-4858

