

# WHY TAKE THE NCLEX IN NEW YORK?



**\*NO SSN NEEDED**



**HOW MUCH IS THE APPLICATION FEE?**

**\$143**



**PAPER OR ONLINE APPLICATION?**

**both**

## REQUIREMENTS AND FEES



- ✓ Child Abuse Training - \$30\*
- ✓ Infection Control - \$30\*
- ✓ CVS (if credential evaluation is through CGFNS) - \$400

*\*Online courses fees depend on the chosen NYSED-approved provider*

*NY requirements may change from time to time; hence, it is best to contact your board.*

**Registration with Pearson VUE for ATT: \$200**

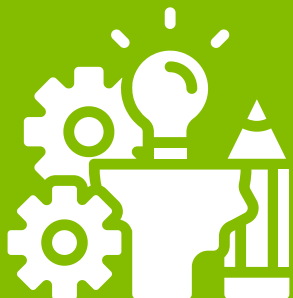
**NCLEX Scheduling Fee: \$150**

## APPROXIMATE TIMELINE

**1 YEAR**

**The timeline is a case-by-case basis and is unique to a candidate's application.**

## IS ENGLISH EXAM NEEDED?



**No English exam needed.**

*This is upon verification of the credential evaluation body.*

## CONTACT DETAILS



**nursebd@nysed.gov**



**518-474-3817, Press 1, Ext 280  
(every Tue or Thur) Ext 120 (Mon to Fri)**

