

WHY TAKE THE NCLEX IN NORTHERN MARIANA ISLAND?



***NO SSN NEEDED**



HOW MUCH IS THE APPLICATION FEE?

\$150



PAPER OR ONLINE APPLICATION?

paper

REQUIREMENTS AND FEES



✓ Accomplished the documents needed as specified by the BON and send it together with the application by mail

MP requirements may change from time to time; hence, it is best to contact your board.

Registration with Pearson VUE for ATT: \$200

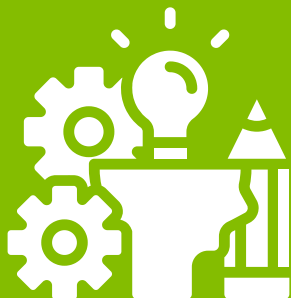
NCLEX Scheduling Fee: \$150

APPROXIMATE TIMELINE

1 YEAR

The timeline is a case-by-case basis and is unique to a candidate's application.

IS ENGLISH EXAM NEEDED?



No English exam needed.

This is upon verification of the credential evaluation body.

CONTACT DETAILS



P.O. Box 501458 Saipan, MP
96950 USA
contact@nmibon.info



TEL: (670) 233-2263 / (670) 234-2264
FAX: (670) 664-4813

